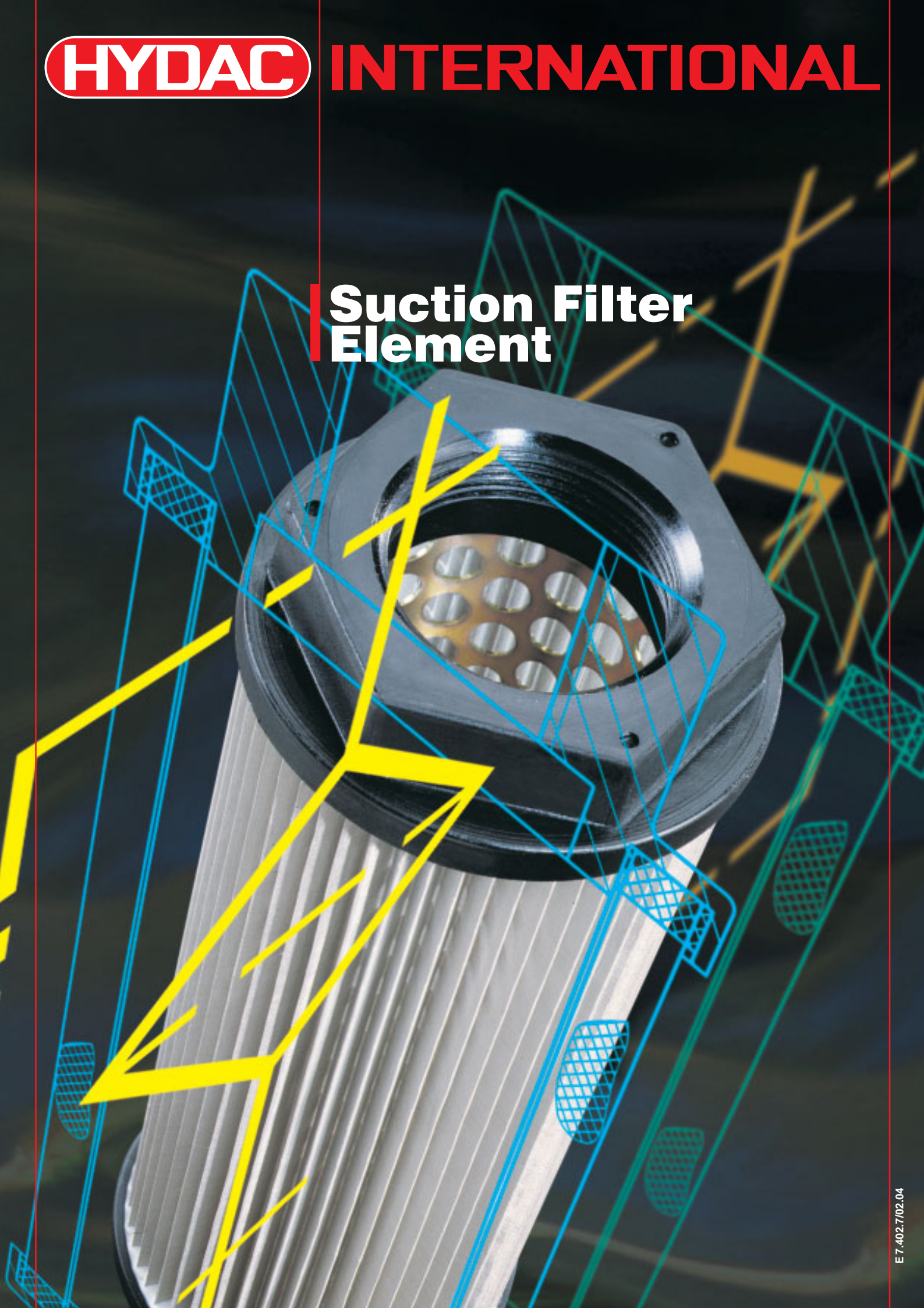


HYDAC

INTERNATIONAL

**Suction Filter
Element**



1. DESCRIPTION

Suction filter elements are designed to be fitted into the suction lines of pumps.

It is important to ensure that the suction filter elements are always fitted well below the minimum oil level. The standard filtration rating is 125 micron.

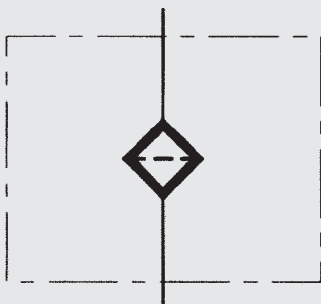
In order to avoid suction problems caused by contaminated elements or cold starts, the suction filter elements can also be supplied with bypass valves.

The cracking pressure of the bypass valve is 0.2 bar.

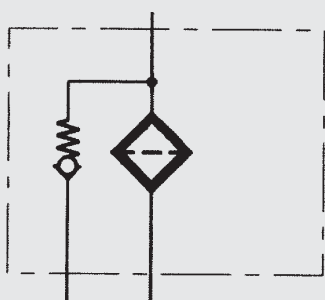
Materials:

Filter mesh: stainless steel
 End caps: polyamide
 Support tube: sheet steel, zinc-plated

2. HYDRAULIC SYMBOLS



without bypass valve



with bypass valve

3. MODEL CODE

(also order example)

0050 S 125 W / -B0.2

Size

0015
 0025
 0050
 0100
 0180

Type of element

S suction filter element

Filtration rating

075
 125

Filter material

W wire mesh

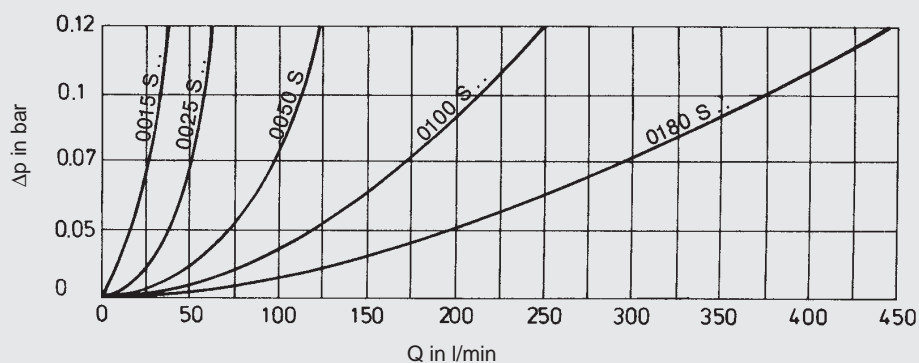
Supplementary details

no details = without bypass valve (standard)

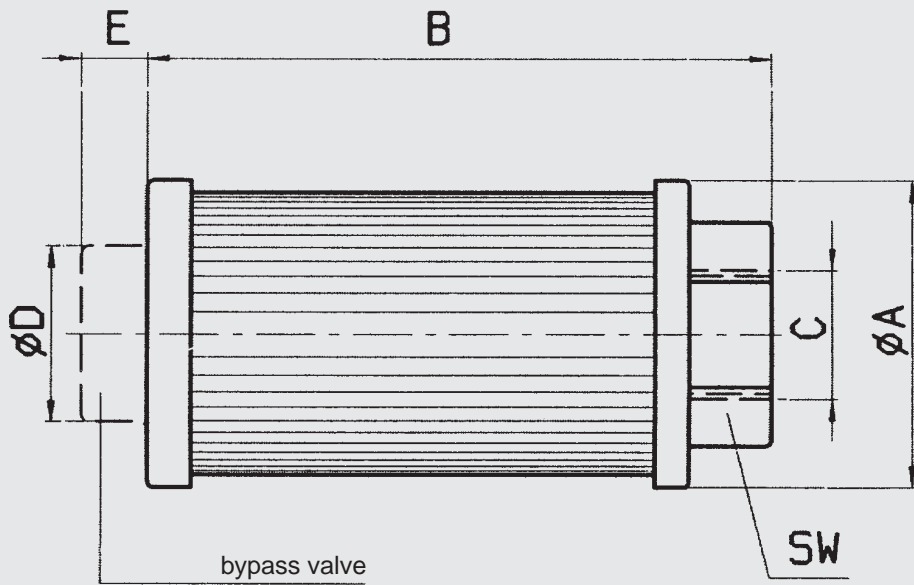
B0.2 = bypass valve with a cracking pressure of 0.2 bar

4. HYDRAULIC DETAILS

Δp -Q curves to ISO 3968, Δp at 30 mm²/s



5. DIMENSIONS



Type	A	B	C	D (ISO 228)	E	SW	Flow rate l/min	Filtration area cm ²
0015 S...	44	104	G 1/2	24	10.5	30	15	300
0025 S...	63	127	G 3/4	36	13.5	46	25	550
0050 S...	63	159	G 1	36	13.5	46	50	720
0100 S...	86	210	G 1 1/2	46	13.5	69	100	1370
0180 S...	86.5	311	G 2	46	13.5	69	180	2110

6. NOTE

The information in this brochure relates to the operating conditions and applications described.

For applications or operating conditions not described, please contact the relevant technical department.

Subject to technical modifications.